

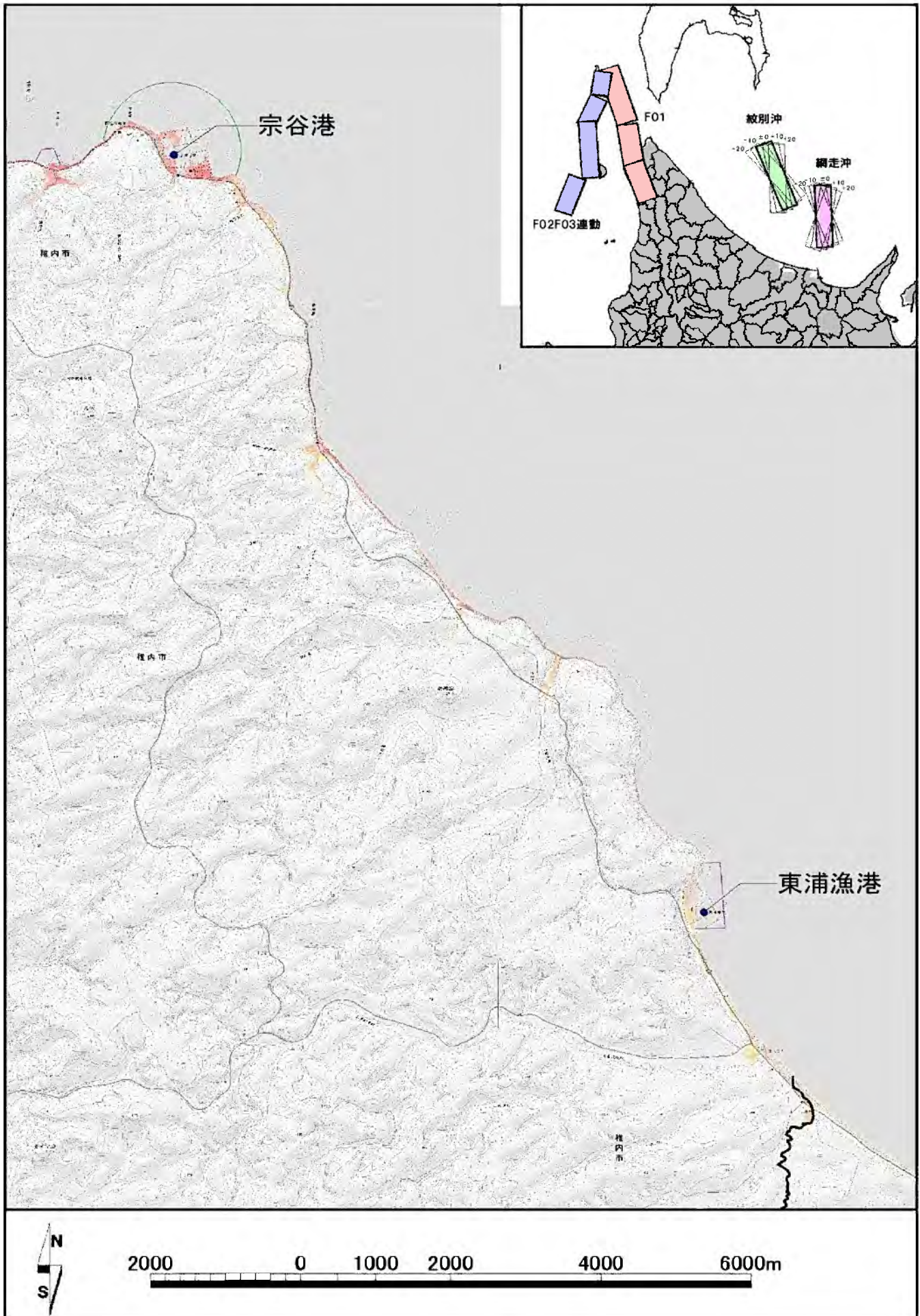
オホーツク海沿岸の
津波浸水想定について 参考資料 3

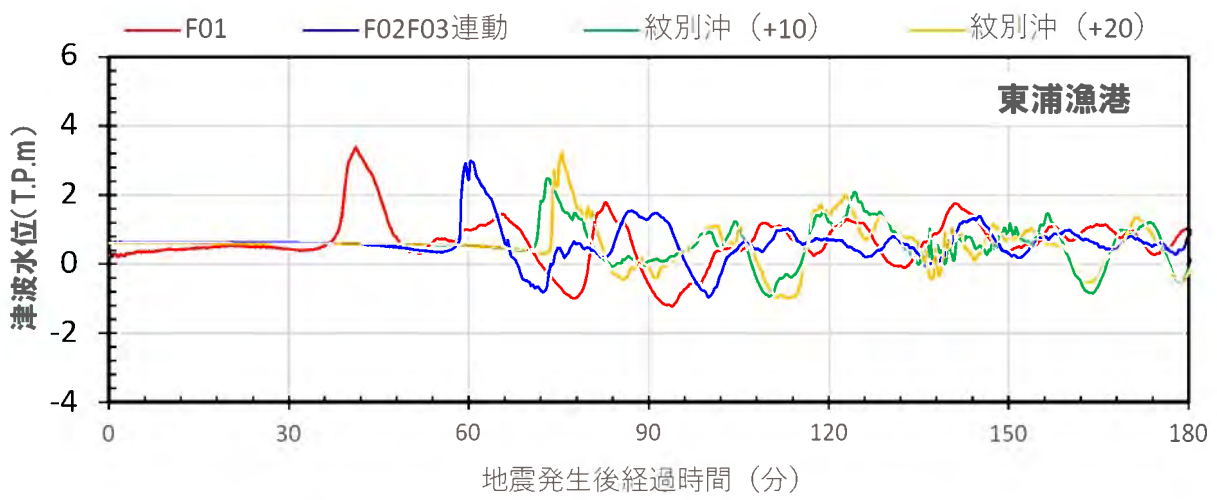
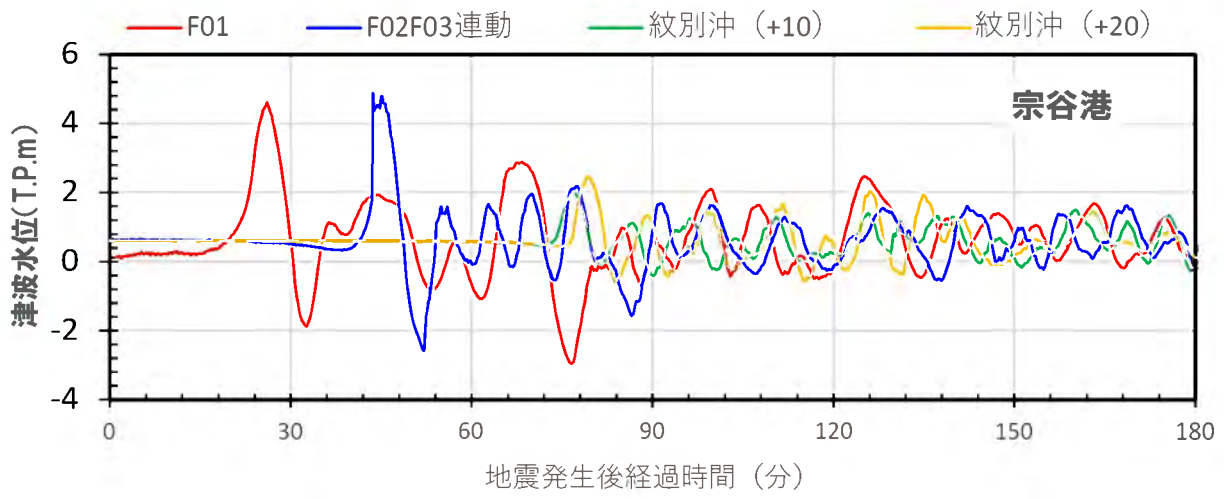
令和 5 年 2 月

北海道防災会議 地震火山対策部会 地震専門委員会
津波浸水想定設定ワーキンググループ

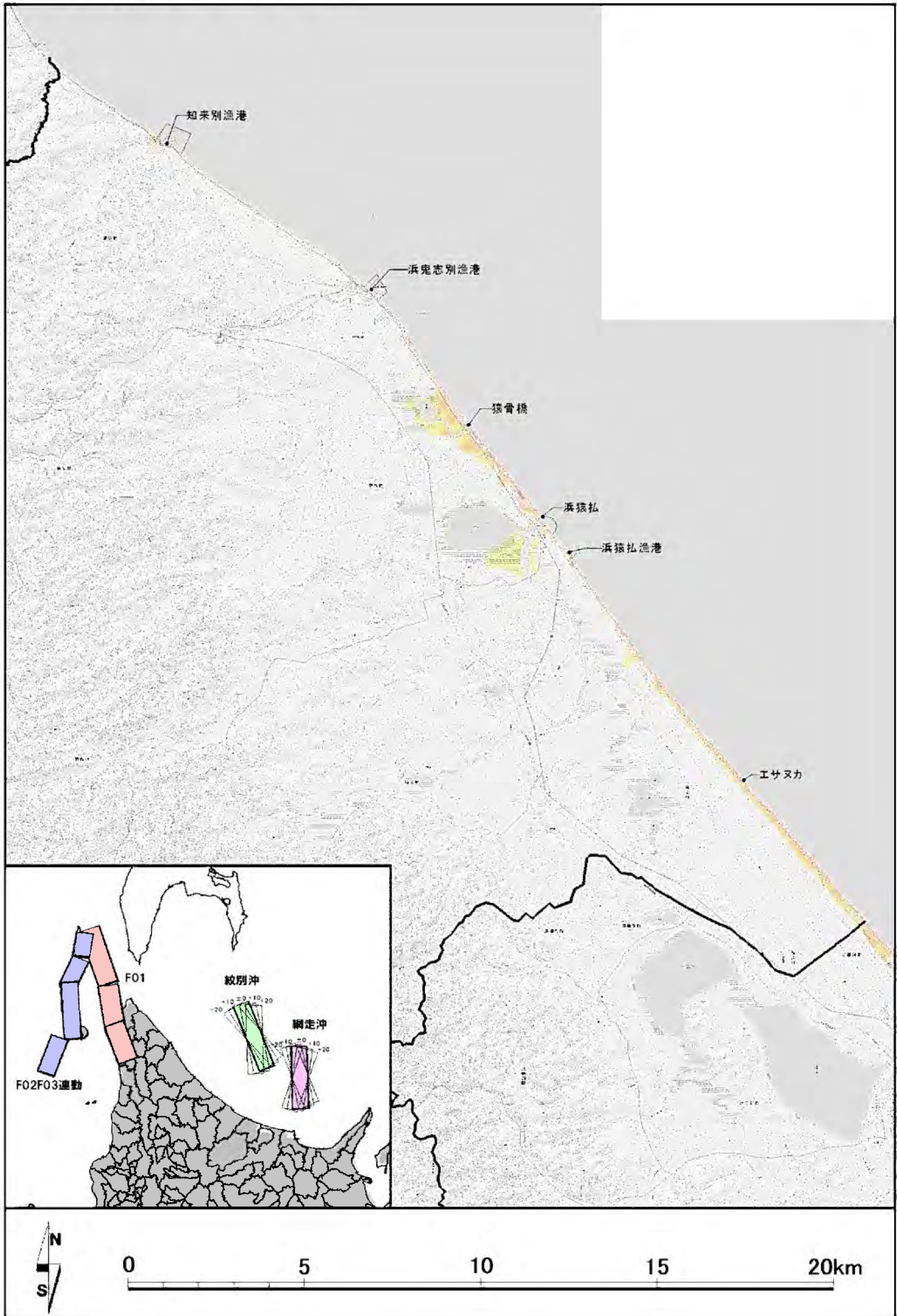
【参考資料3】： 市町村別代表地点の津波水位変動

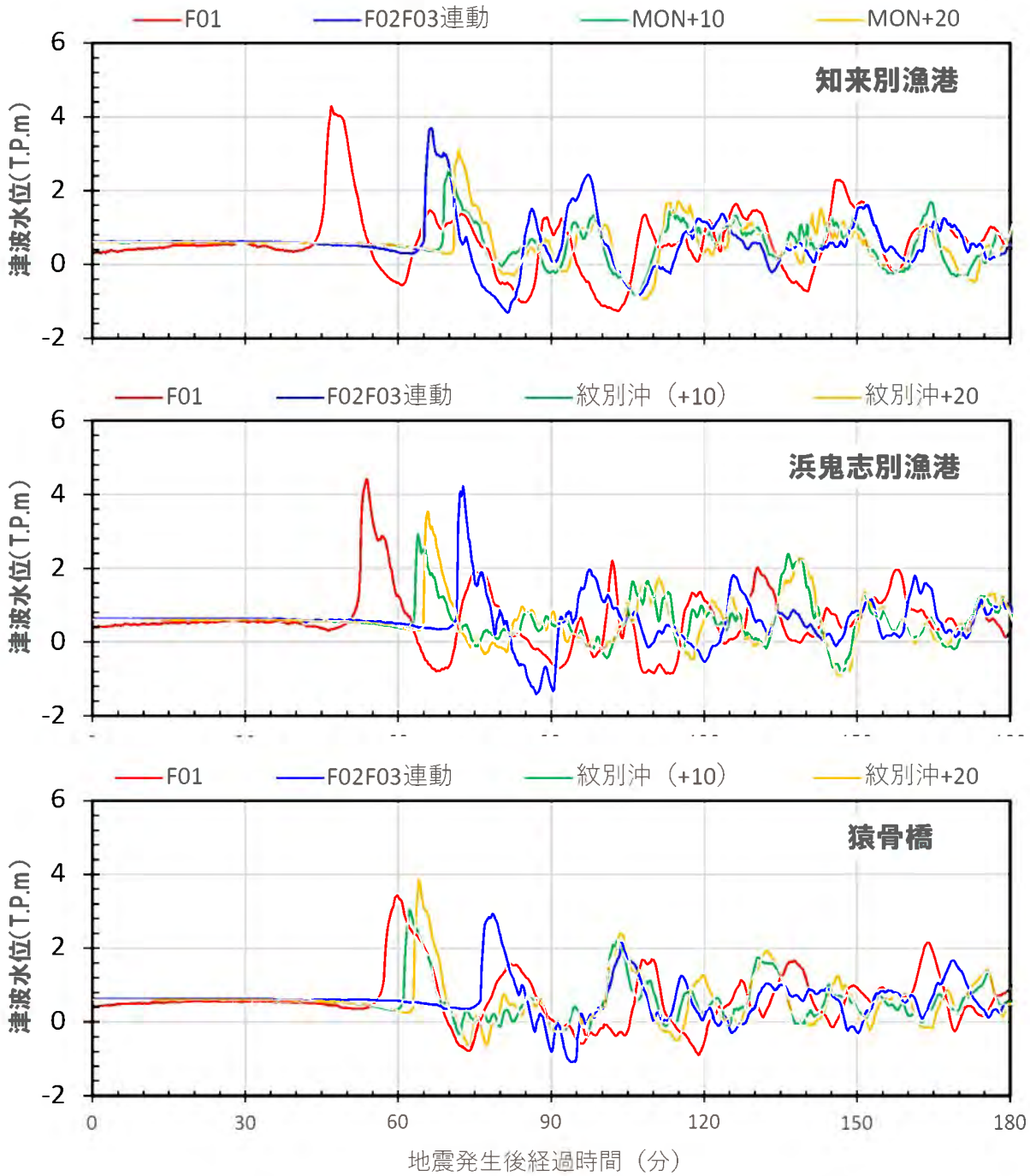
【稚内市】:代表地点の津波水位変動

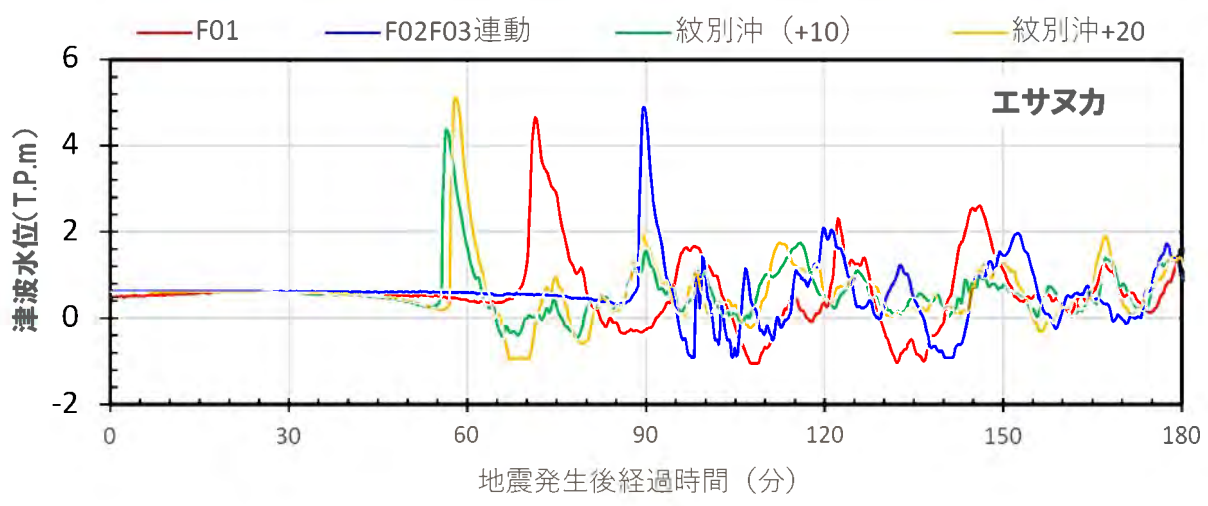
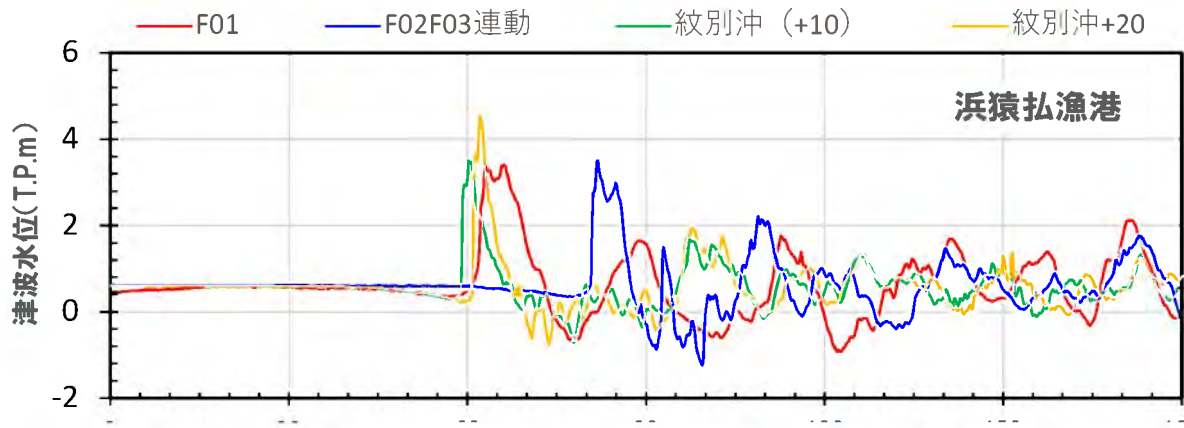
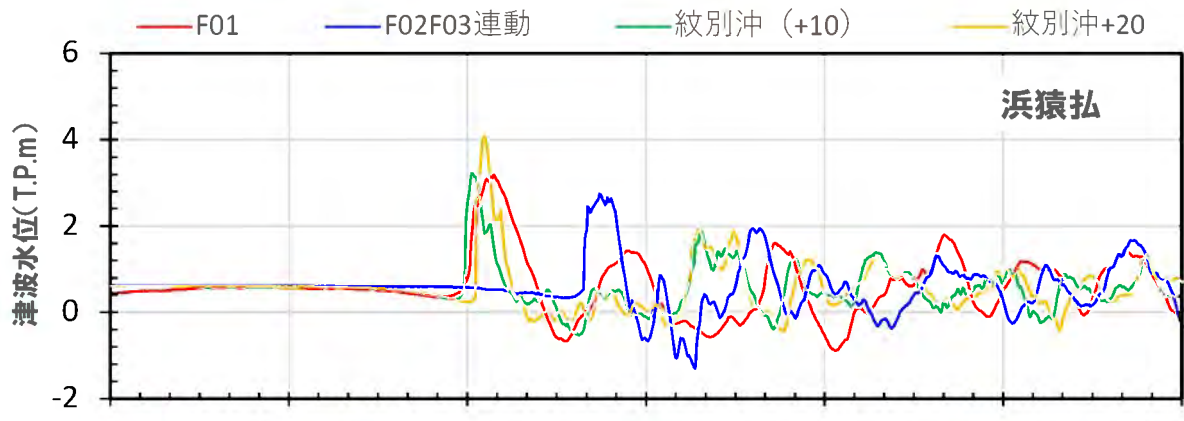




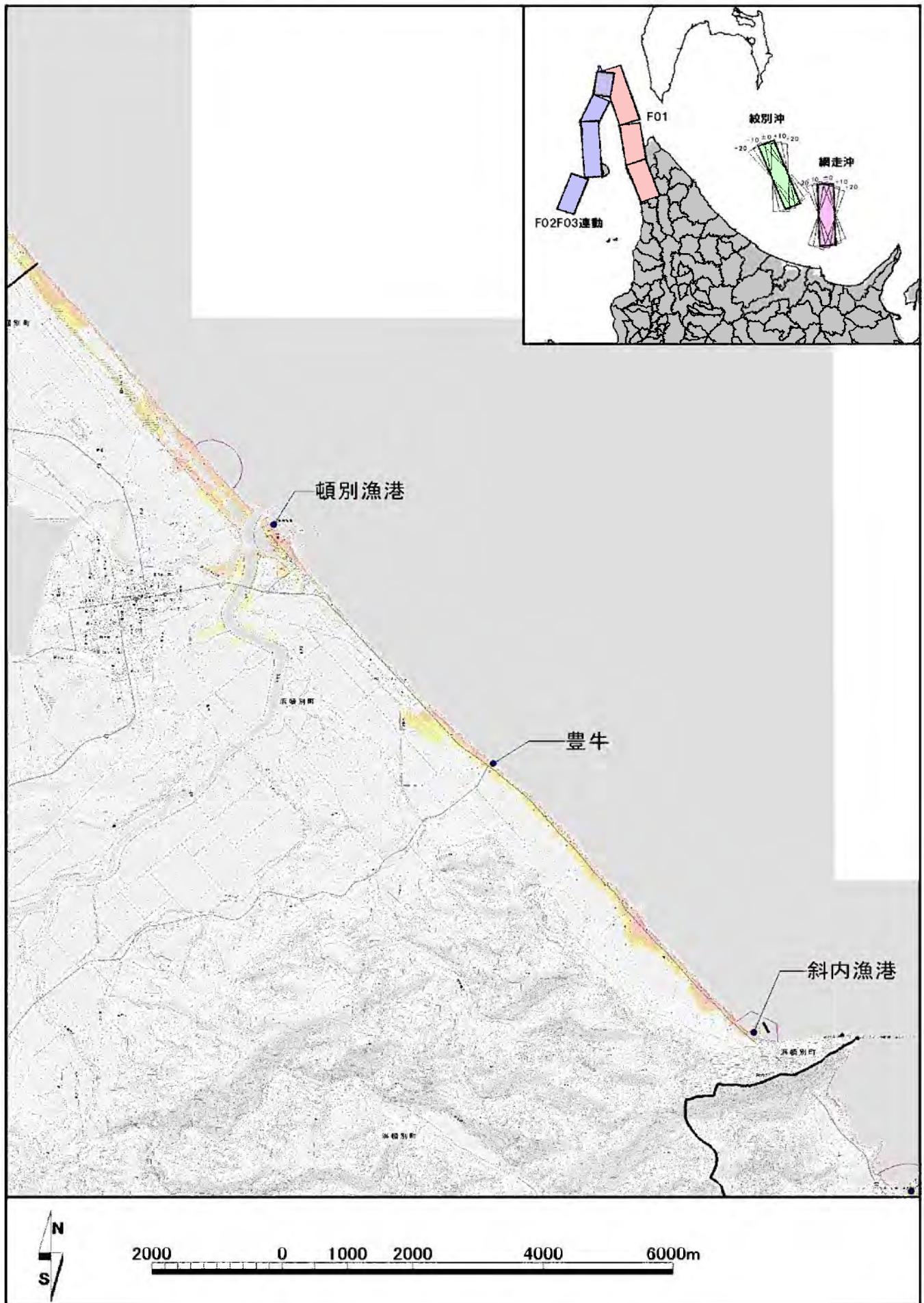
【猿払村】:代表地点の津波水位変動

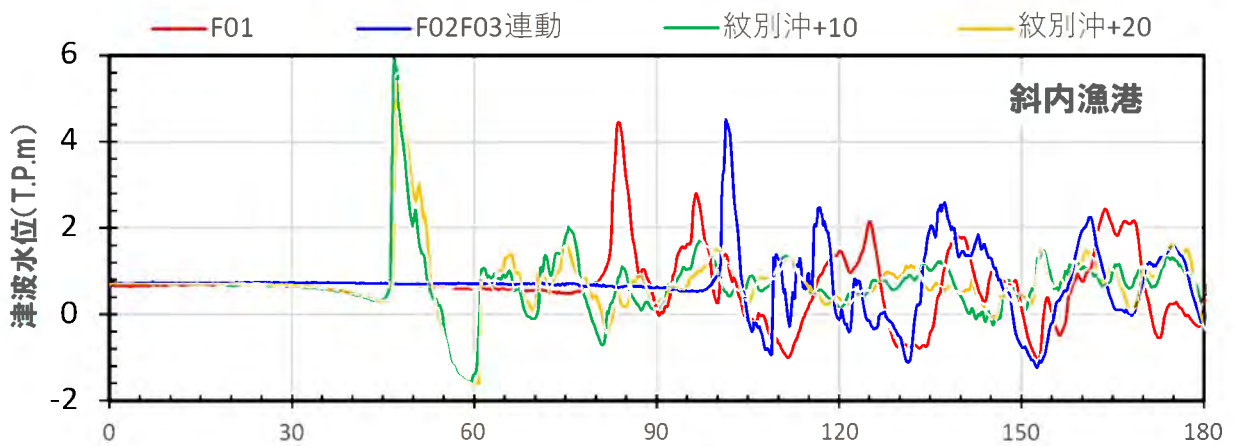
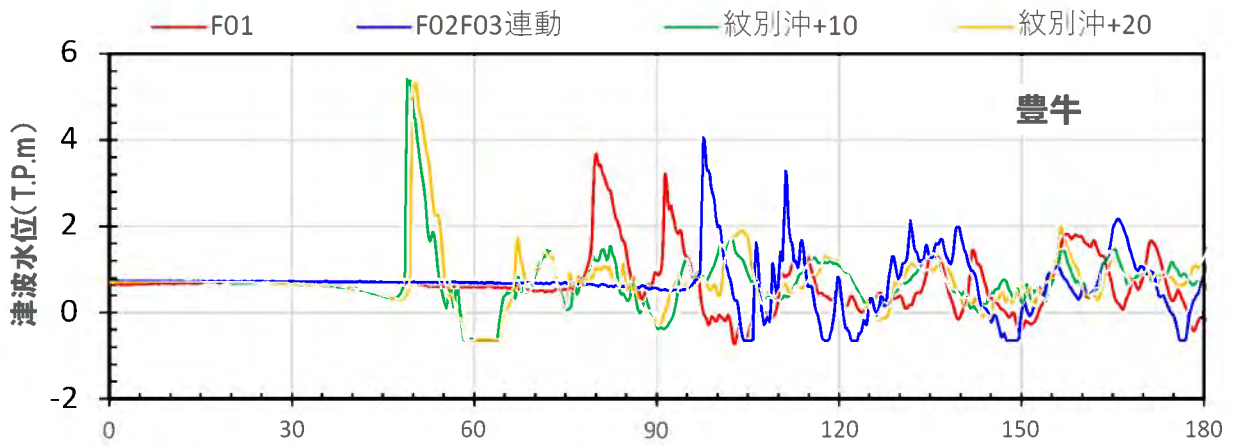
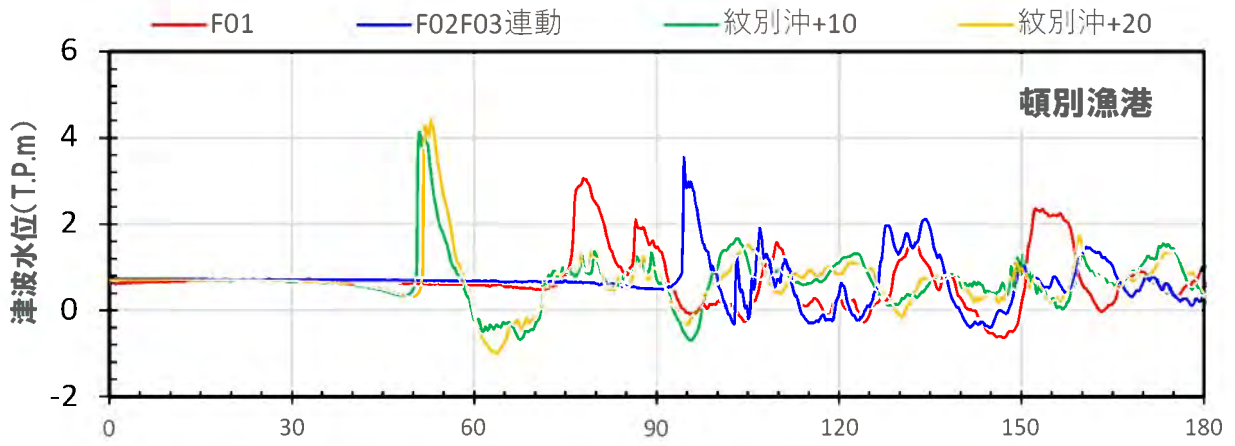






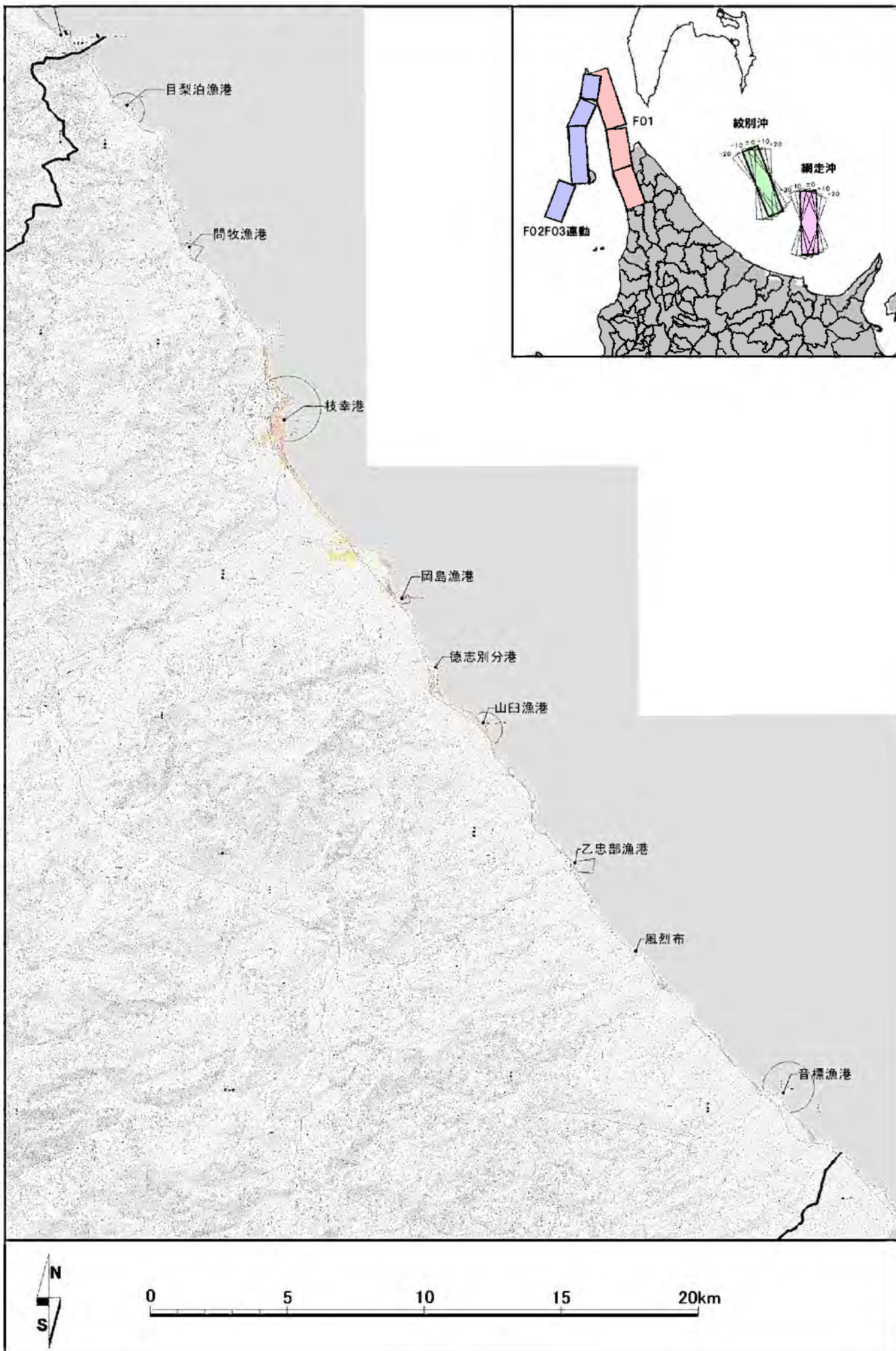
【浜頓別町:代表地点の津波水位変動】

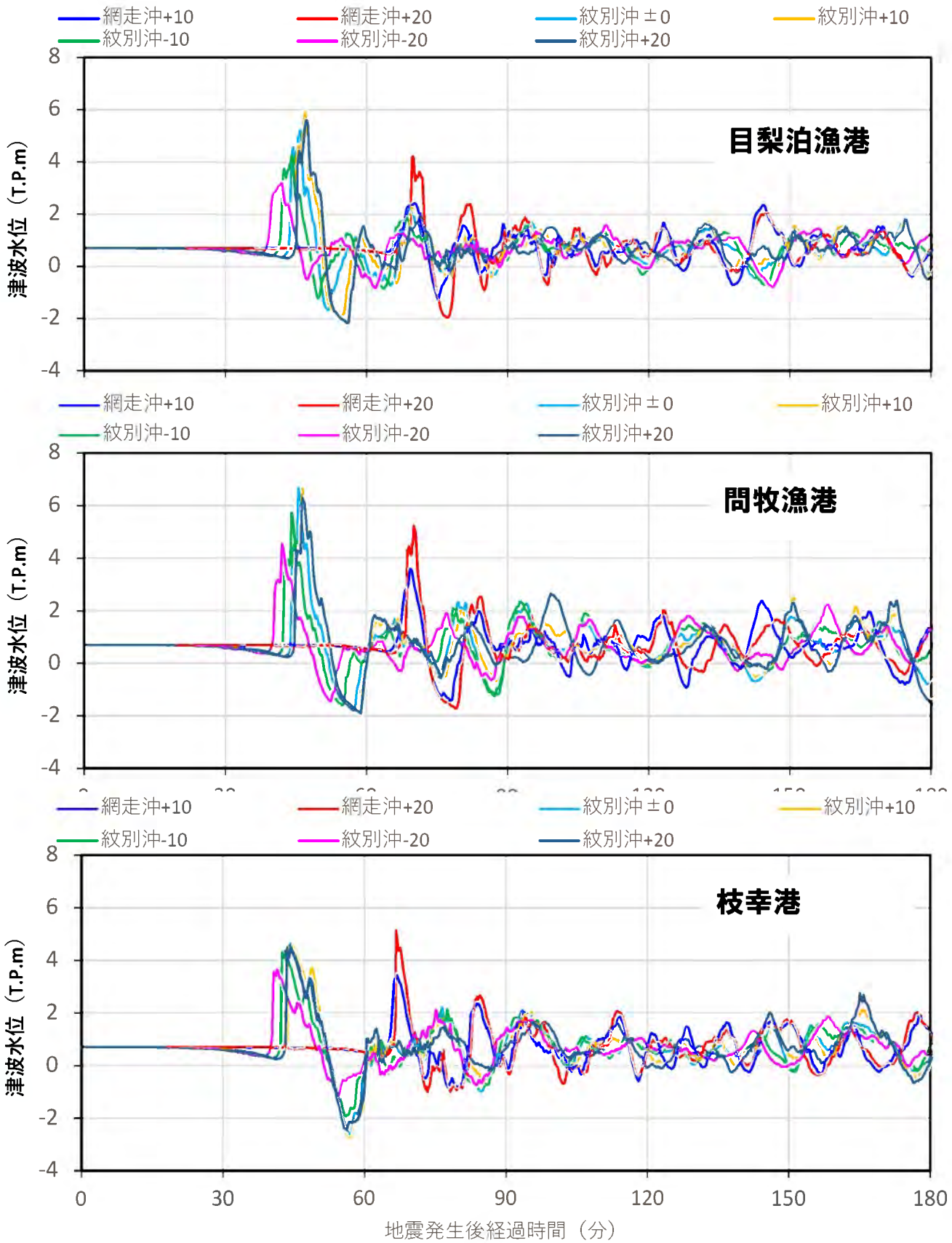


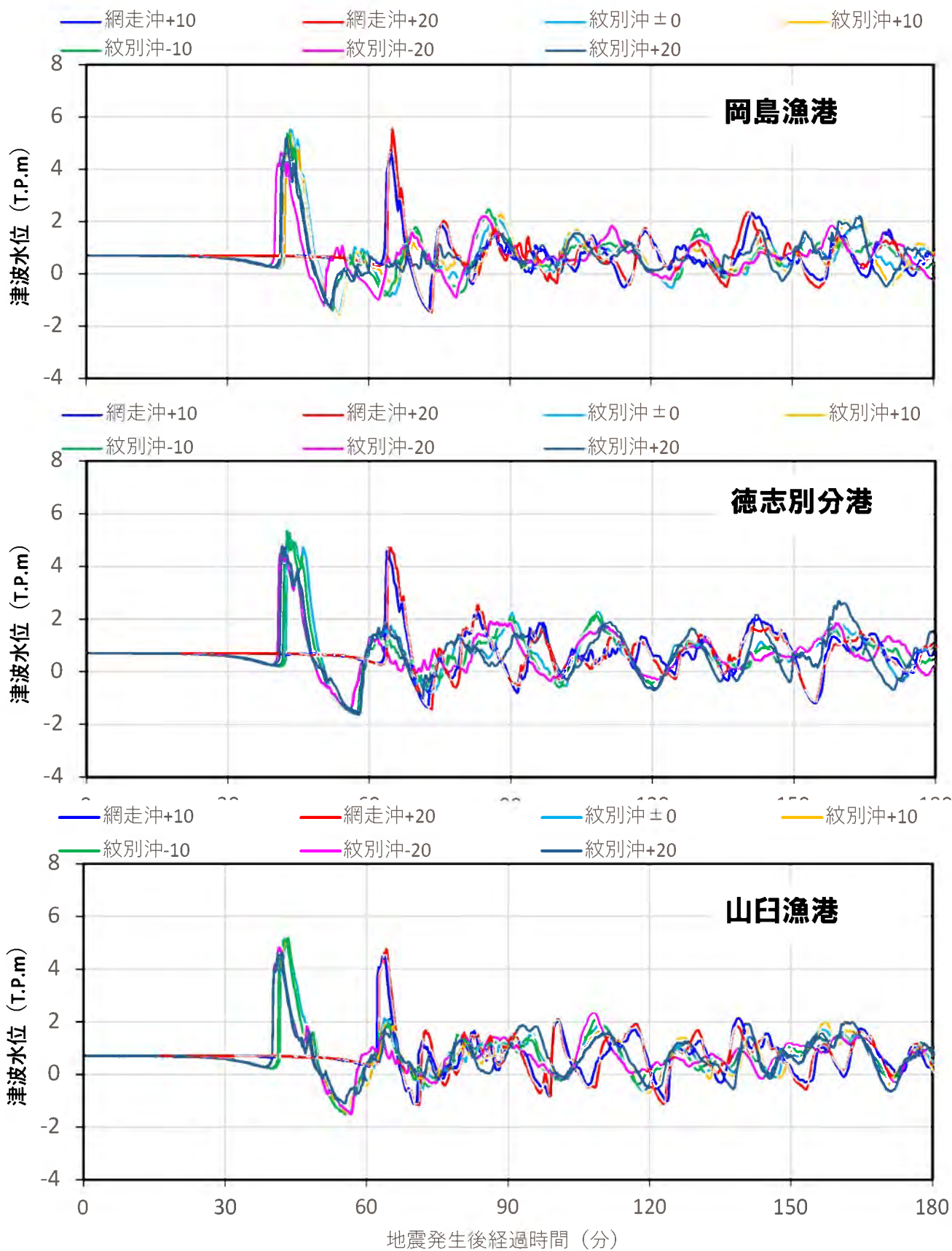


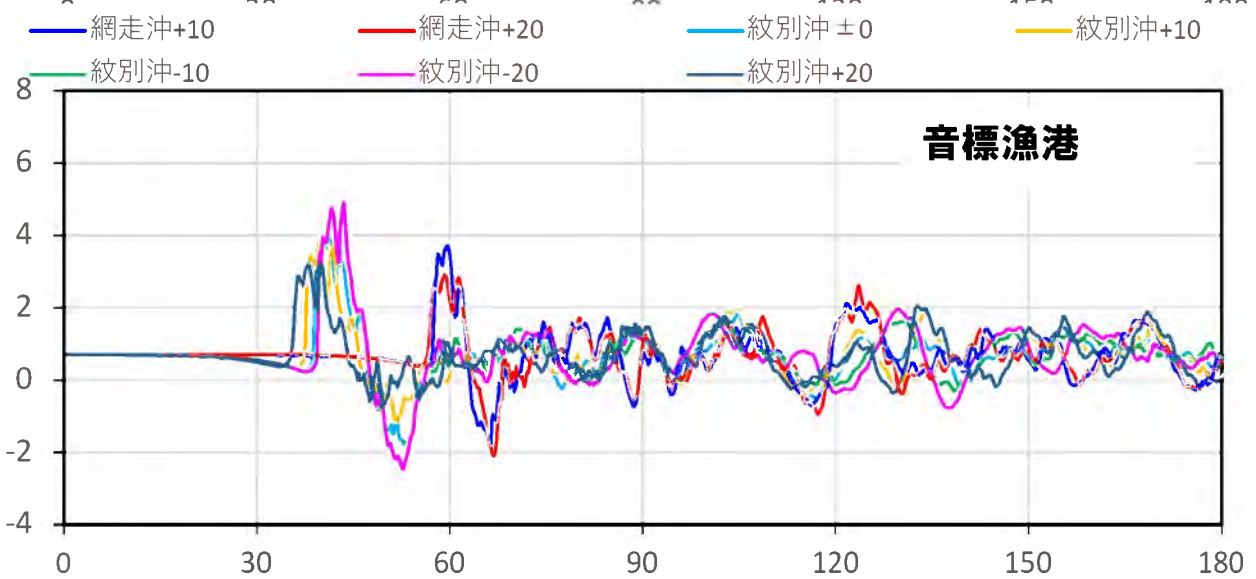
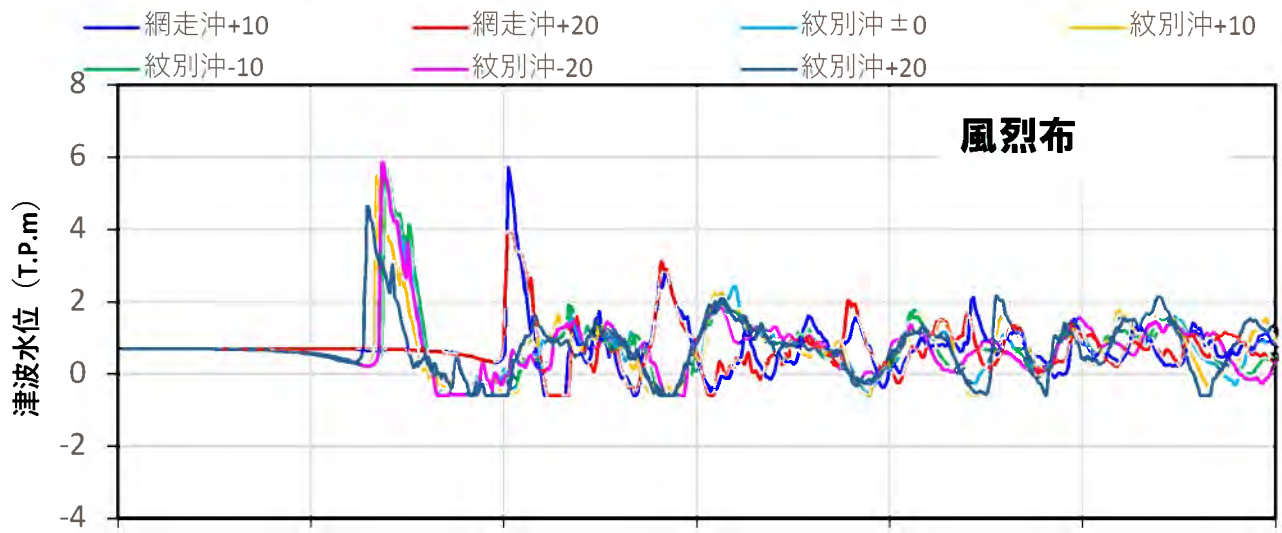
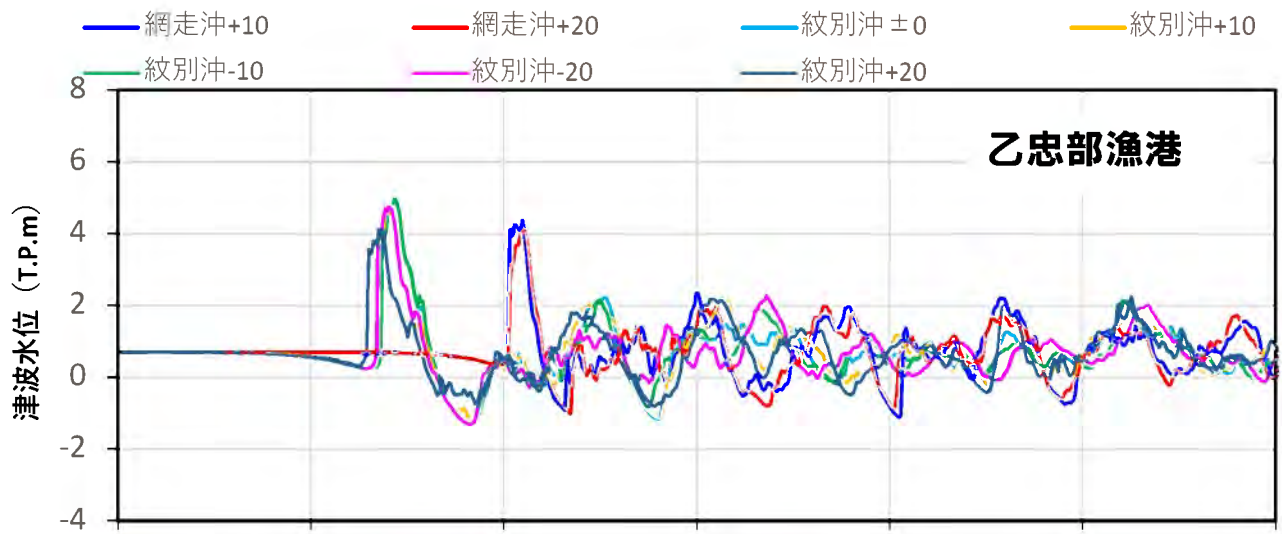
地震発生後経過時間 (分)

【枝幸町:代表地点の津波水位変動】

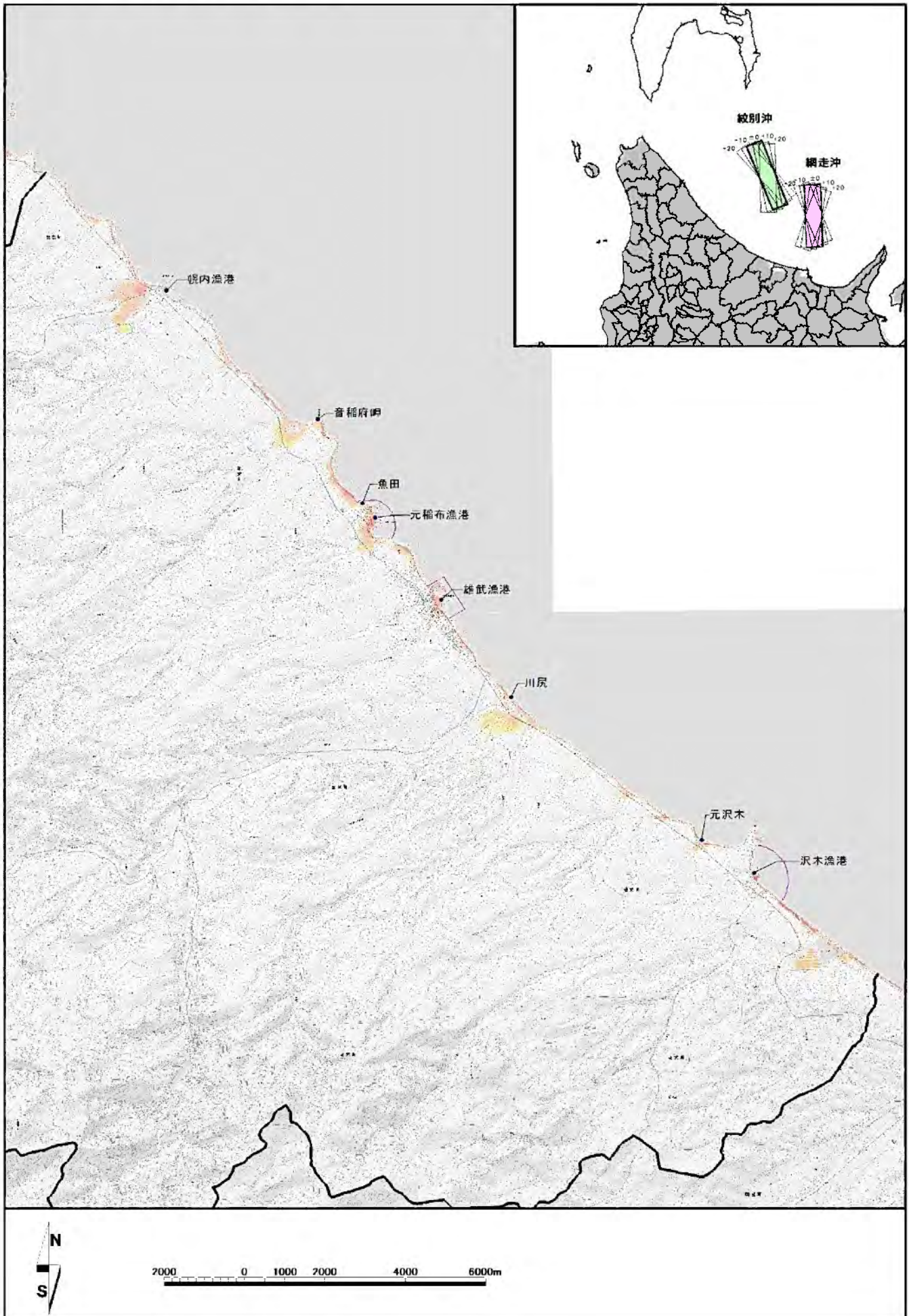


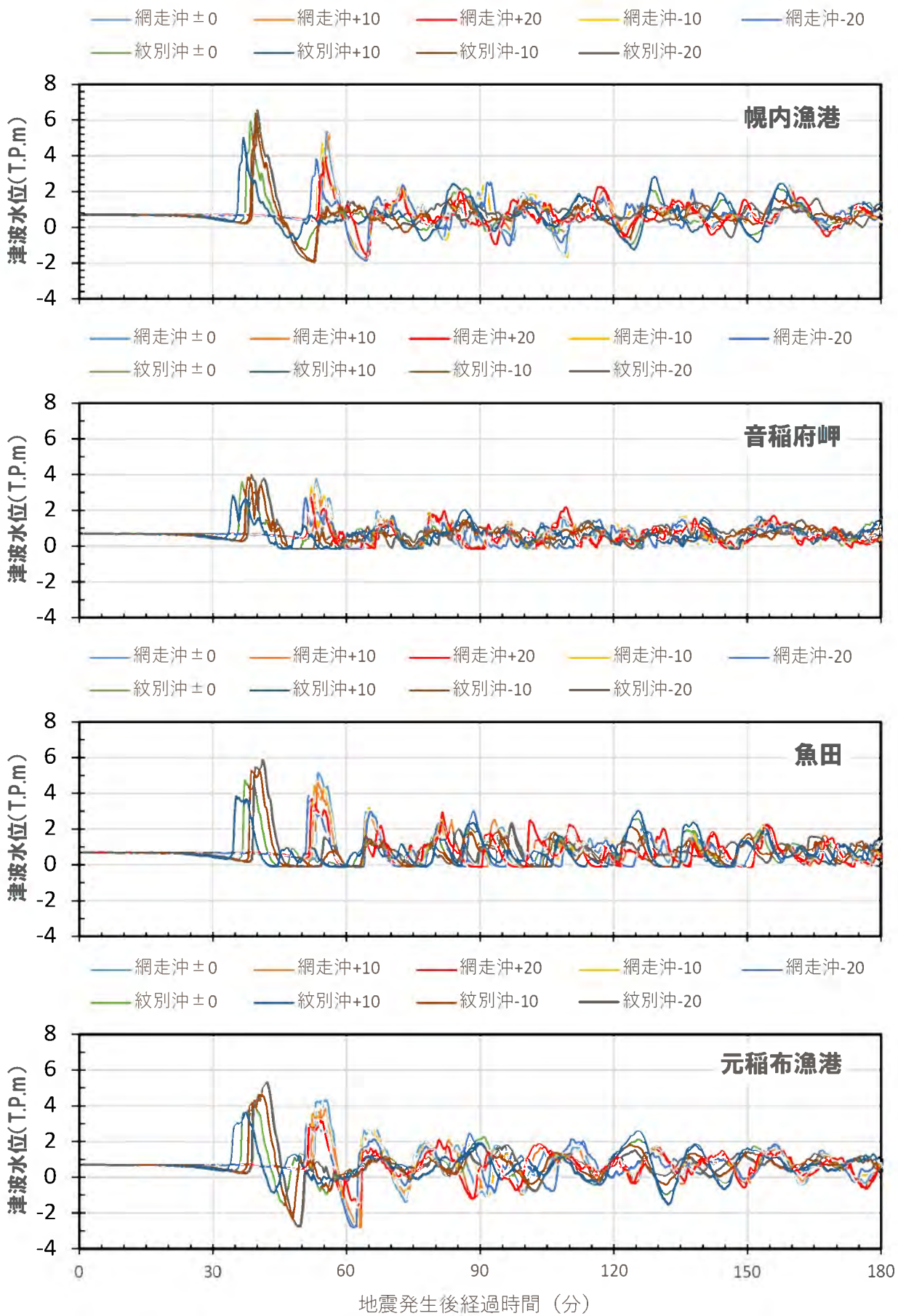


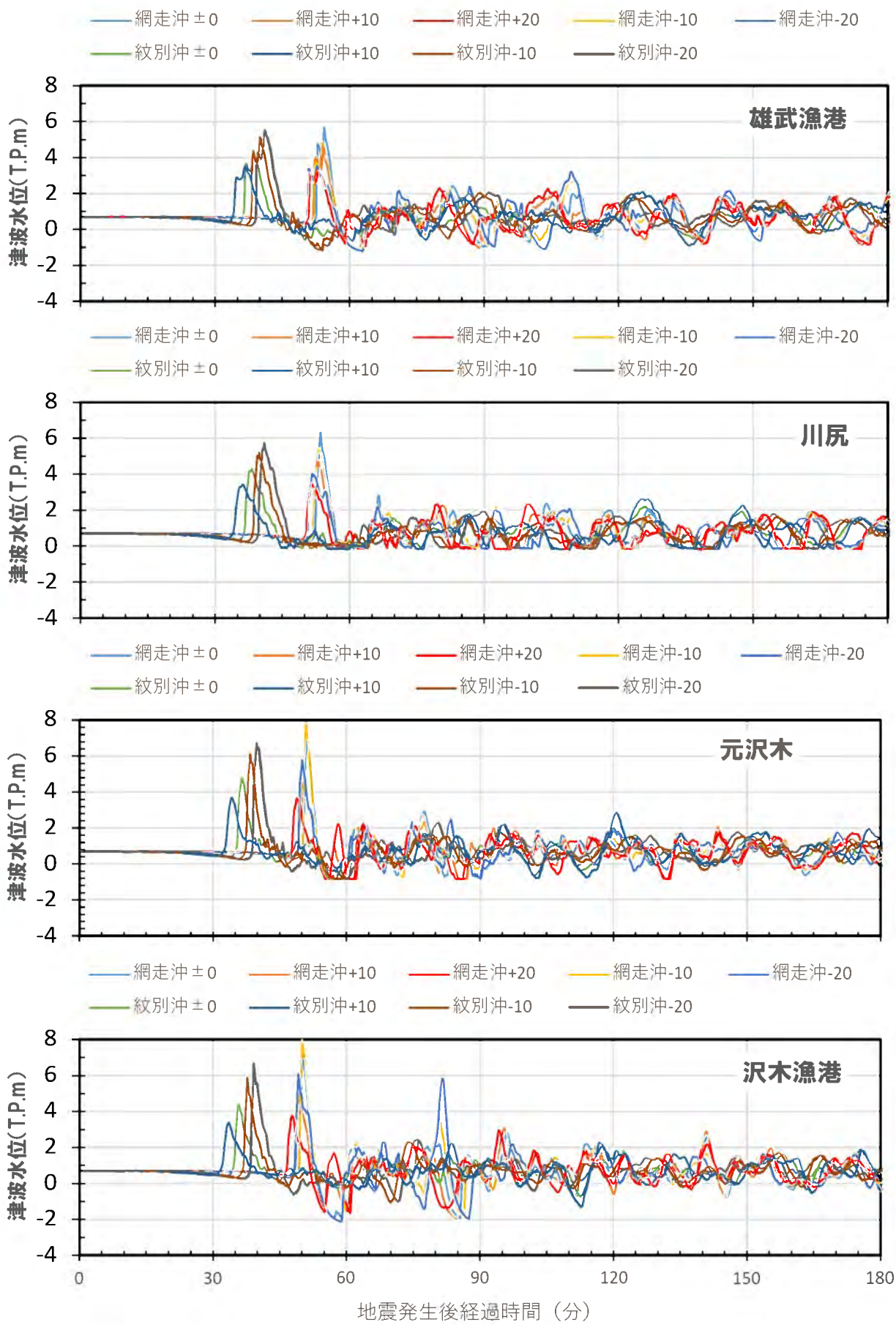




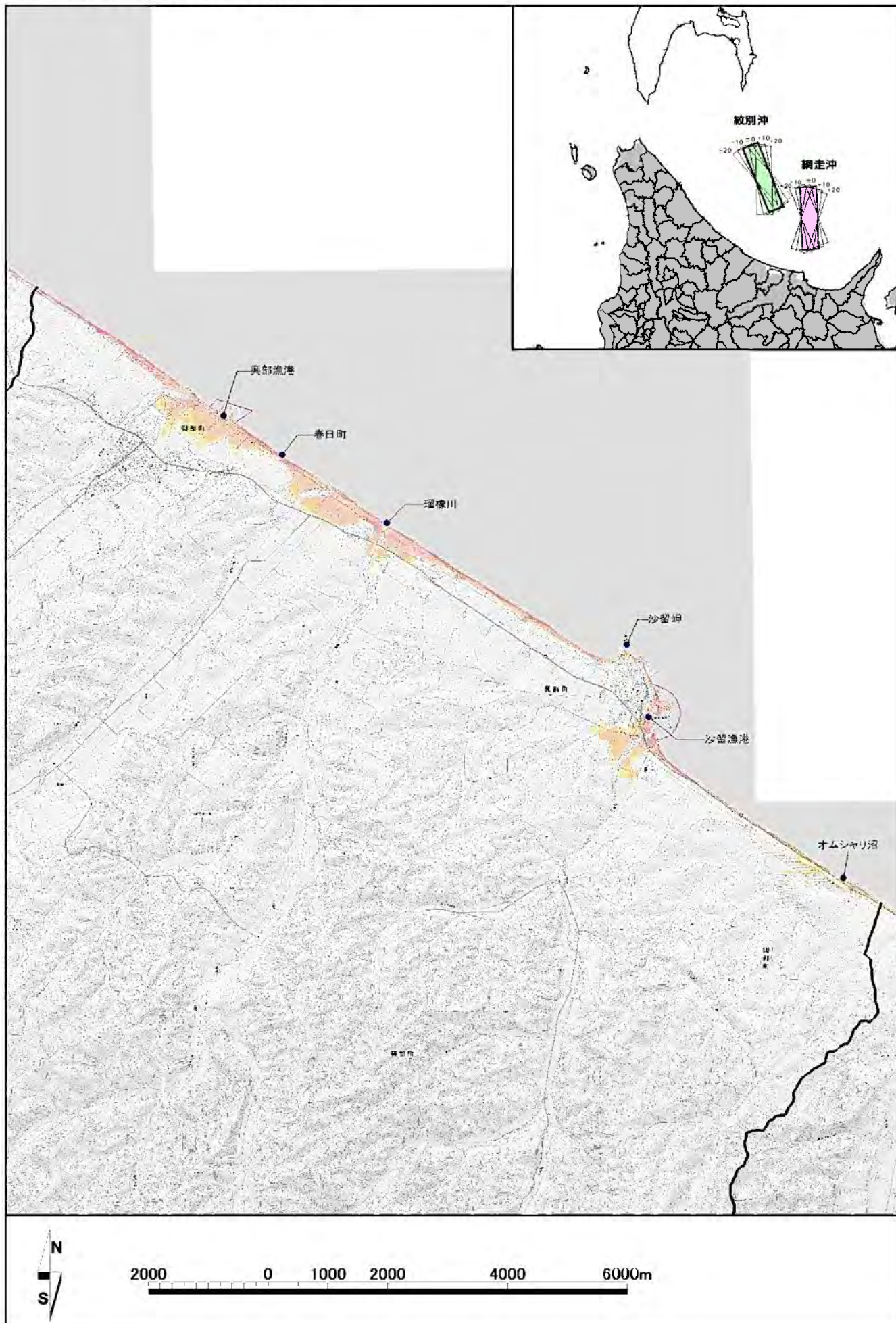
【雄武町:代表地点の津波水位変動】

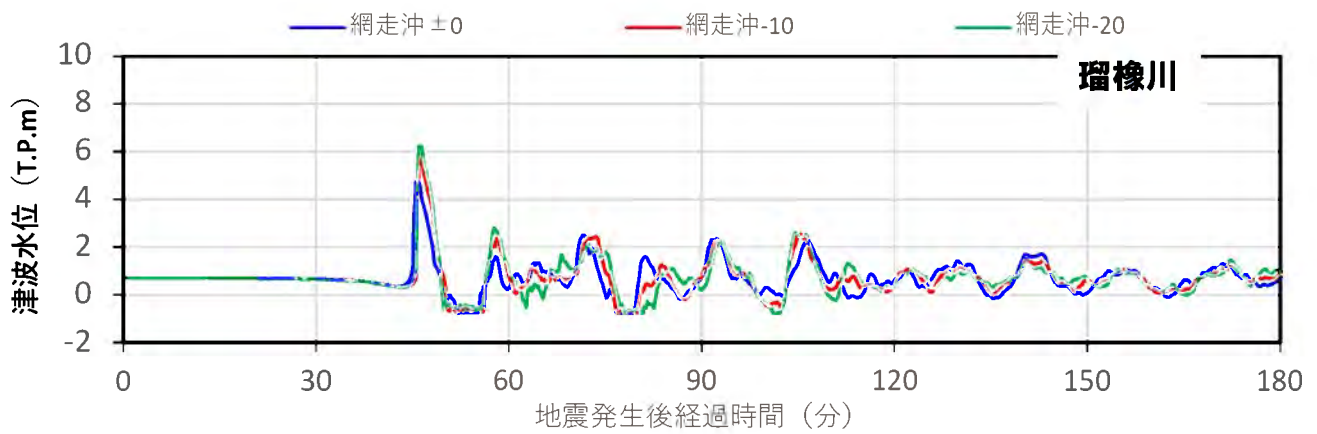
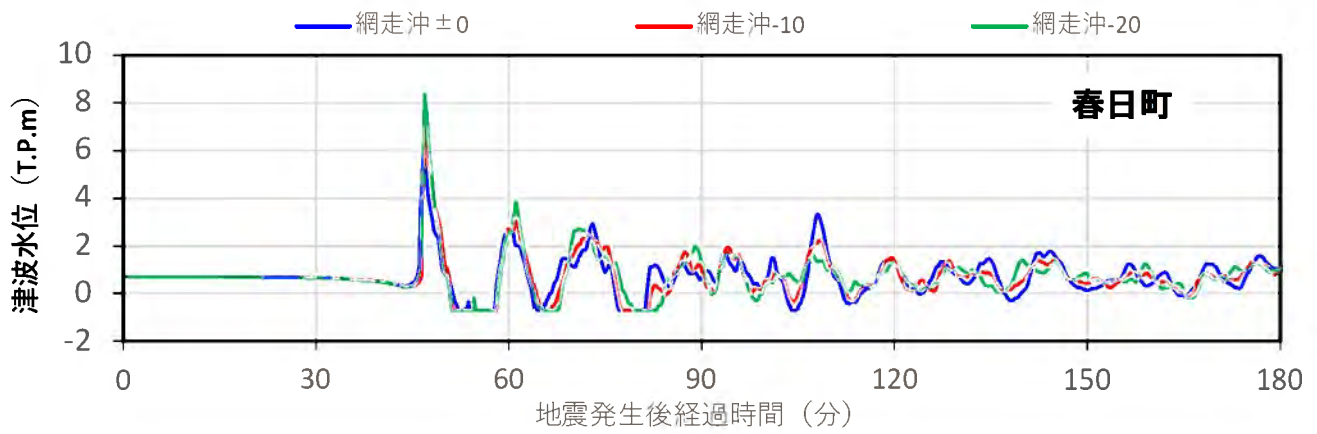
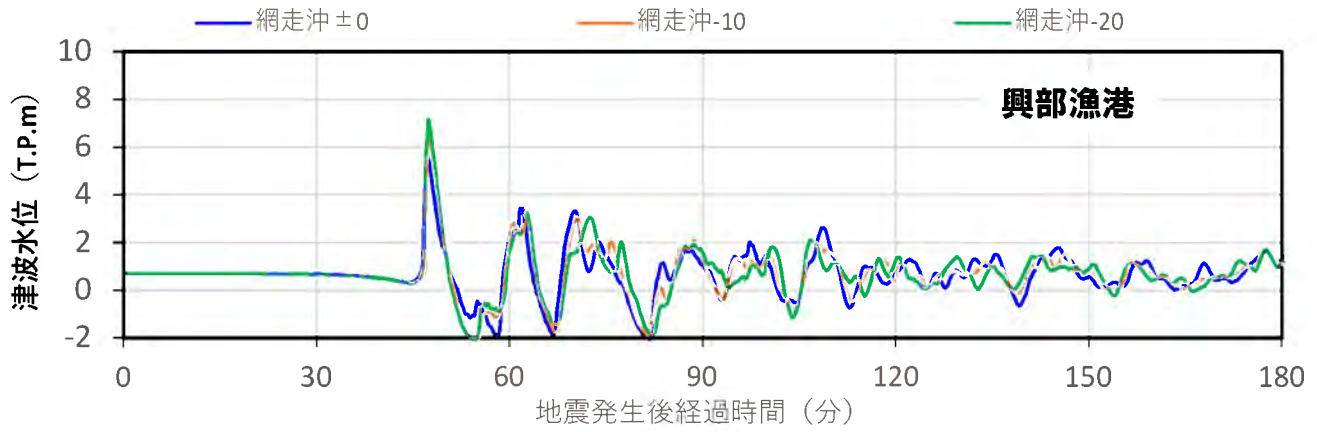


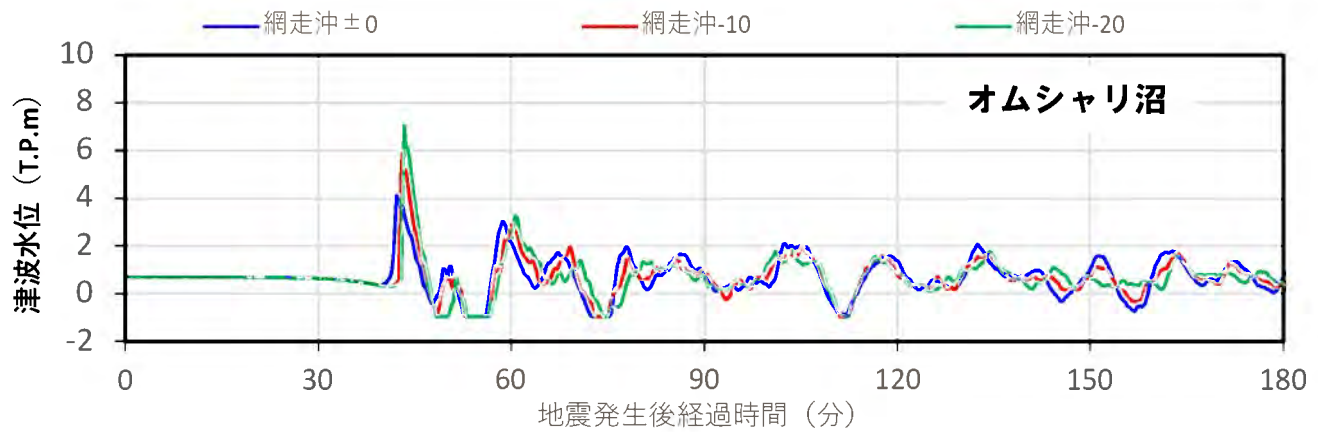
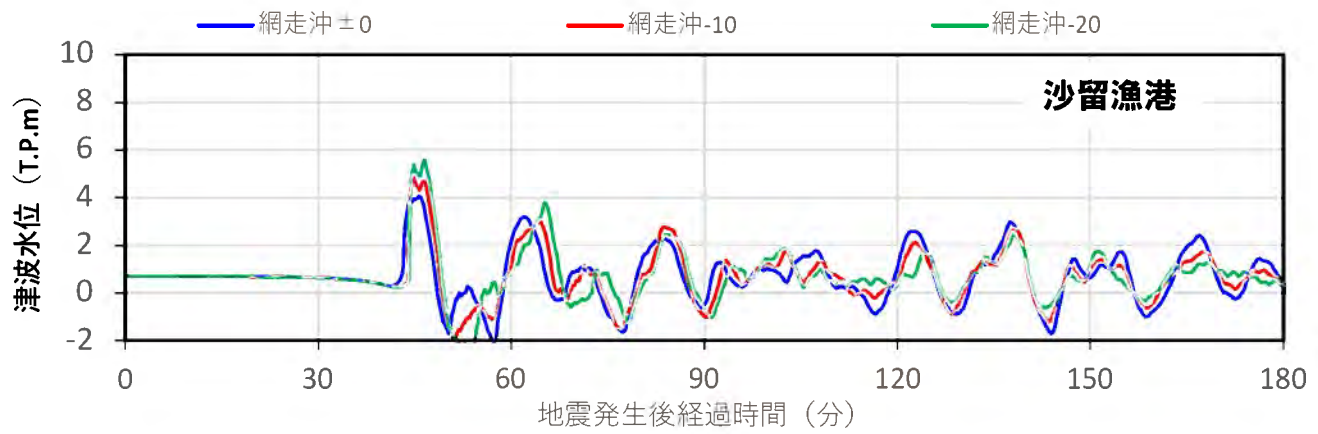
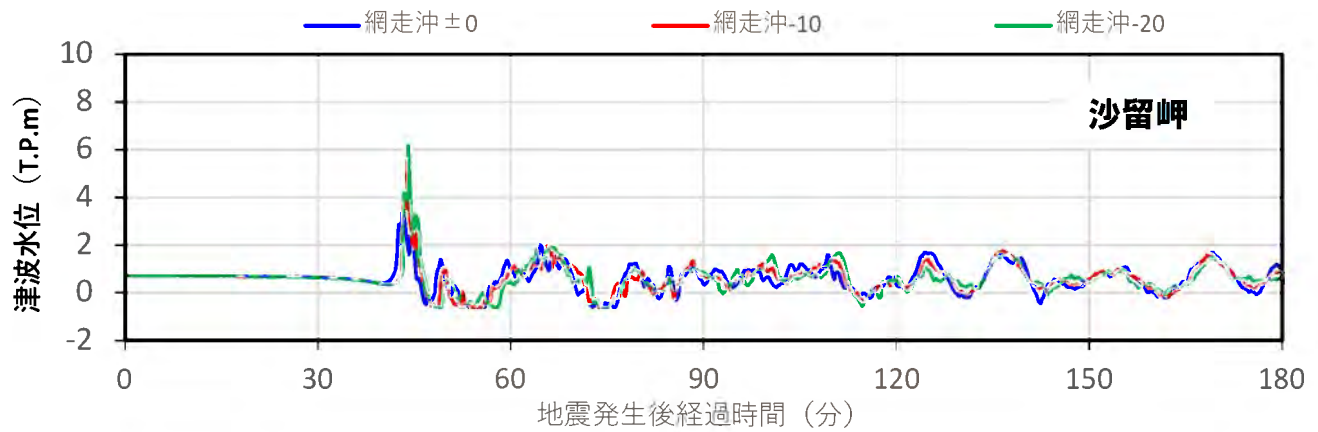




【興部町:代表地点の津波水位変動】







紋別市:代表地点の津波水位変動

